

Flat. 8 The Parkside 193 Hart Road, Fallowfield, Manchester, M14 7BA

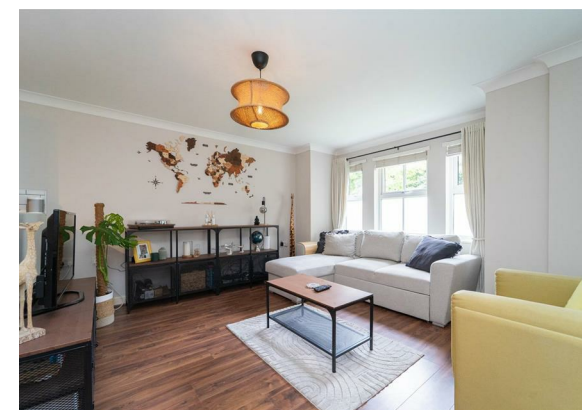


JP&Brimelow
ESTATE AGENTS

Offers In The Region Of £195,000




VIDEO TOUR AVAILABLE A spacious & well-presented, TWO DOUBLE BEDROOM, ground floor apartment. Situated within the attractive period conversion on Hart Road, in Fallowfield. A short walk to Wilmslow Road with a selection of shops, bars, restaurants and Sainsbury's supermarket. Close by to Platt Fields Park, central Fallowfield amenities and the available bus routes giving you direct access into the city centre. Within walking distance to good local primary schools, and the Fallowfield loop for walks, runs and cycling to Chorlton and Levenshulme. In brief the apartment consists of a communal entrance hall with stairs leading to all floors, a private entrance hall with useful storage cupboard, two double bedrooms one benefitting from a storage cupboard, a delightful open plan lounge/ fully fitted kitchen, and a white three-piece bathroom suite. Other benefits include electric heating, high ceilings, an intercom system, and allocated parking.





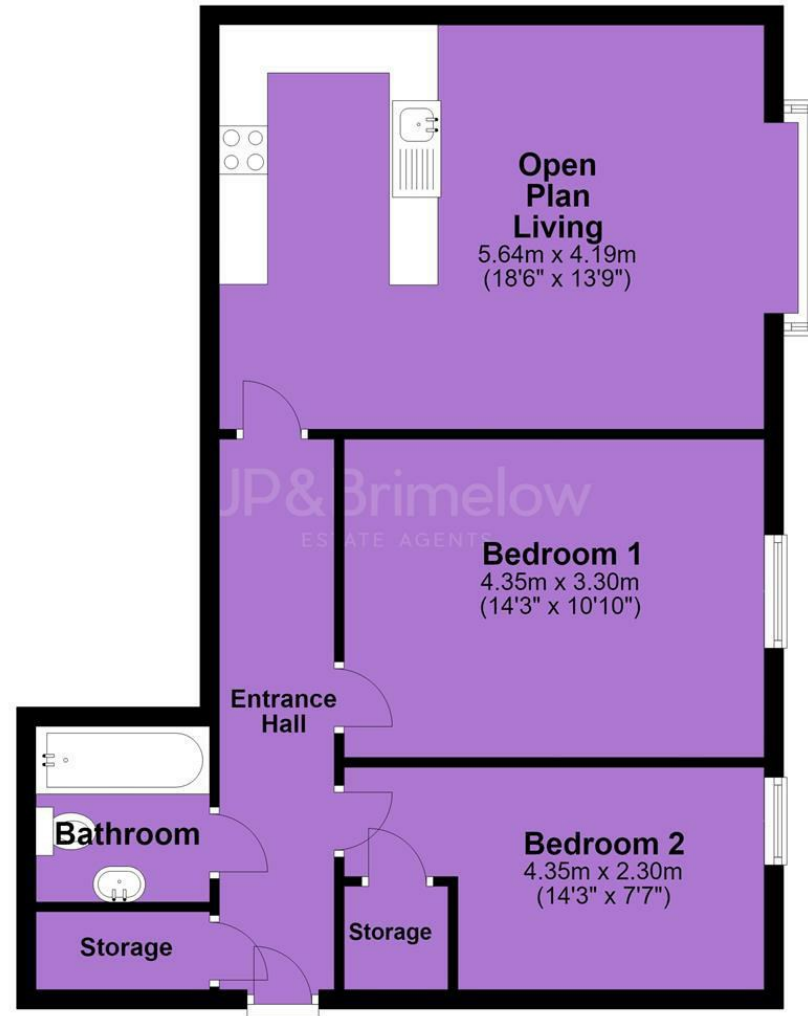
EPC Chart

Energy Efficiency Rating		
	Current	Potential
<i>Very energy efficient - lower running costs</i>		
(92 plus) A		
(81-91) B		
(69-80) C	70	80
(55-68) D		
(39-54) E		
(21-38) F		
(1-20) G		
<i>Not energy efficient - higher running costs</i>		
England & Wales	EU Directive 2002/91/EC 	



Tenure: **Leasehold** Council Tax Band: **C**

Ground Floor



JP & Brimelow Estate Agents Ltd
430 Barlow Moor Road, Manchester, M21 8AD
Tel: 0161 8822233
E: sales@jpbrimelow.co.uk www.jpandbrimelow.co.uk



JP & Brimelow
ESTATE AGENTS

NOTICE: JP & Brimelow Estate Agents Ltd for themselves and for the vendors or lessors of this property whose agents they are give notice that:

- (i) the particulars are set out as a general outline only for the guidance of intending purchasers or lessees, and do not constitute, nor constitute part of, an offer or contract;
- (ii) all descriptions, dimensions, references to the condition and necessary permissions for use and occupation, and other details are given in good faith and are believed to be correct but any intending purchasers or tenants should not rely on them as statements or representations of fact but must satisfy themselves by inspection or otherwise as to the correctness of each of them;
- (iii) no person in the employment of JP & Brimelow Estate Agents Ltd has any authority to make or give any representation or warranty whatever in relation to this property.

 [jpandbrimelowstateagents](https://www.instagram.com/jpandbrimelowstateagents)

 [@jpandbrimelow](https://twitter.com/jpandbrimelow)